

Slide Plate

Thickness 10 mm

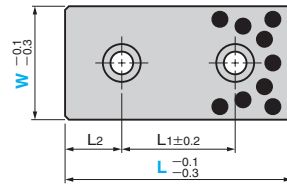
STEEL TYPE

CAD FILE

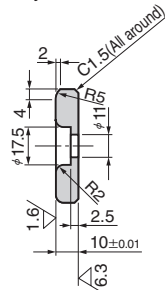
TSP



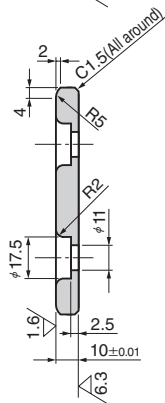
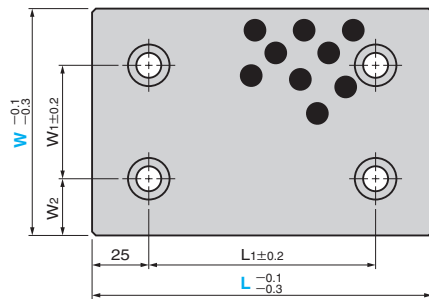
● W = 28 to 75



* R2 only for W=28



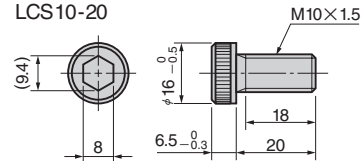
● W = 100 or more



● Sliding Direction



● Special brazier head bolt
(LCS standard)
LCS10-20



Material : SKS3 with Graphite
Hardness : HRC53-56
Accessory : Mounting Bolt
(Special Brazier Head Bolt)

W ₁	W ₂	L ₁	L ₂	Catalog No.	W	L
		45	15			75
		50			28	100
		75	25			125
		100				150
		45	15			75
		50			38	100
		75	25			125
		100				150
		45	15			75
		50		TSP	48	100
		75	25			125
		100				150
		25	25			75
		50			75	100
		75				125
		100				150
		50				100
		75			100	125
50	25	100		150		
		150		200		
		75			125	125
	37.5	100		150		



Order

Catalog No.

TSP

W

75

-

L

150

■ We are ready to accept requests or orders for special parts.